



GasFinder3-VB (Vehicle Based)

Vehicle Based Laser Gas Detection

GasFinder3-VB Highlights



GasFinder3-VB on Headache Rack Mounting Structure

Mobile Natural Gas Detection System

Using a laser-based gas detection technique

Fast Speed of Response + Recovery

Monitor, detect and travel at highway speeds

Superior Tolerance to Vibration

Vibration helps to integrate and quiet the analysis

Long Life Span and Robust Operation

Excellent Return-on-Investment

About Tunable Diode Laser (TDL)

Laser Light is the Sensing Element

Class 1 Eye Safe: Near Infrared (NIR) Laser Light

This Counts the Target Gas Molecules

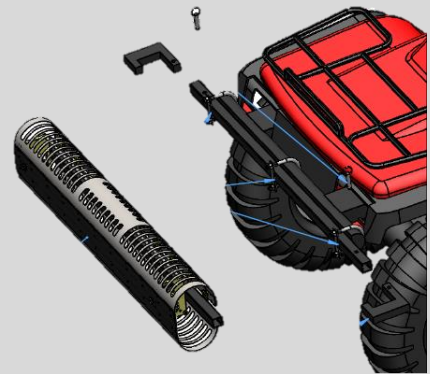
As they pass through the Active Measurement Path

Quantifiable Volumetric Result

Confirmation of both gas type and concentration

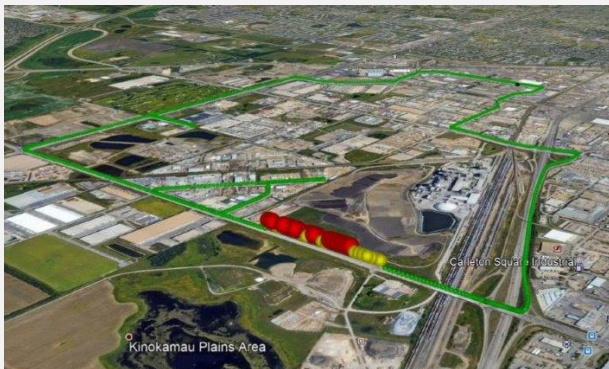
No Interference + No False Alarms

This only detects the specific target gas of interest



GasFinder3-VB on Generic Mounting Structure

The Operator's Choice



Visualized Data overlaid on Google Maps

Validation with Actual Target Gas

Internal Reference Cell interrogated once a minute

No Field Intervention or Calibration

Adjustments done autonomously & automatically

Practically No Measurement Drift

Operational Temp. Range: -55 to 65°C (-67 to 149°F)

Fail Safe Design and Operation

Diagnostics with no undisclosed failure modes

GasFinder3-VB Gas Analyzer

Use the Vehicle to Power the GasFinder

GasFinder3-VB is powered by 12-24 VDC (20 Watts)

HMI Touchscreen: Indication + Interface

No app or laptop required for commissioning

Built-in Data Storage

Easily access up to 20 years' worth of stored data

Rugged and Robust Design

Solid state electronics with no moving parts



GasFinder3-VB (Vehicle Based)
Laser Based - Gas Analyzer

Vehicle Based Measurement Cell



Vehicle Based (VB) Measurement Cell shown
with Protective Filter Cover

Vehicle Based (VB) Measurement Cell

Formulates the Active Measurement Path

Various Mounting Options Available

Headache Rack and Generic Mounts

Low End Detection Thresholds

Detectable Range of Methane: 0.6 to 2,800 ppm

Protective Filter Cover

Keeps the optical components clean & functional

Other Components in the Assembly

Rugged Tablet to Run GasMap Software

Used as both local indication and interface

Windows based GasMap Software

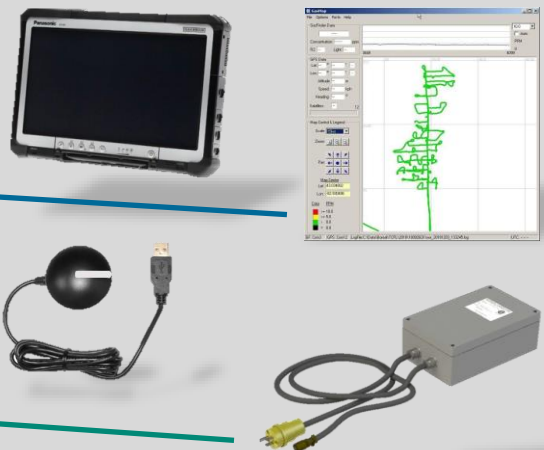
Used to meld the collected gas and locational data

GPS Dongle

Used to gather locational data such as Lat. & Long.

Power Conditioner

Convert and clean power generated by the vehicle



Ask your Local Distributor for

LIVE VIDEO DEMO

GENERAL ARRANGEMENT

DATA SHEETS

DETAILED INSTRUCTIONS

Rev: Jan. 6th, 2022