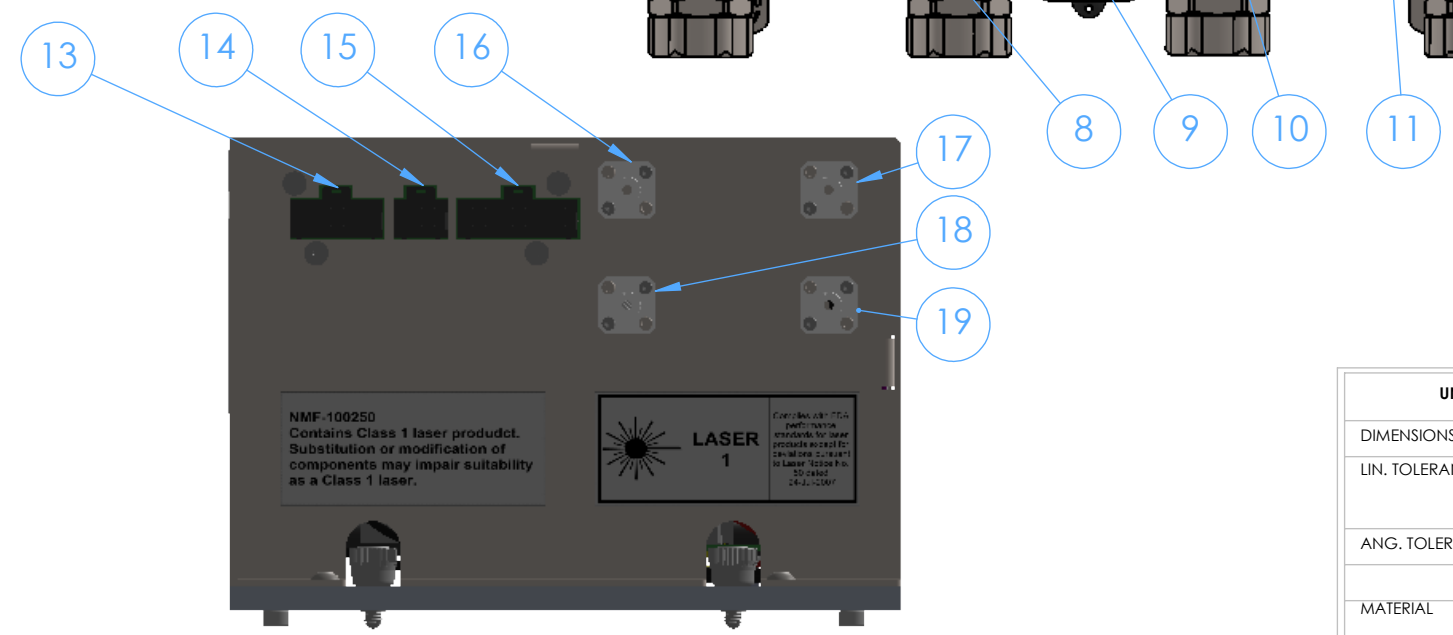


Item	Description
1	Fused 24VDC Power Terminals
2	Modbus - (RS485)
3	Analog Output via (LAM)
4	Digital Output via (LAM)
5	Analog Module (AM)
6	Relay Module (RM)
7	Laser Analyser Module (LAM)
8	Channel 1 - RJ45 Connection
9	Channel 2 - RJ45 Connection
10	Channel 3 - RJ45 Connection
11	Channel 4 - RJ45 Connection
12	Analog/Relay Input
13	Internal Connection - "Power/Interface"
14	Internal Connection - "Internal Module"
15	Internal Connection - "Measurement Head"
16	Channel 1 Fiber Connection (FC/APC)
17	Channel 2 Fiber Connection (FC/APC)
18	Channel 3 Fiber Connection (FC/APC)
19	Channel 4 Fiber Connection (FC/APC)
20	HMI Touchscreen Assembly



**PROPRIETARY AND CONFIDENTIAL**  
 THE INFORMATION CONTAINED IN THIS DRAWING IS THE SOLE PROPERTY OF BOREAL LASER INC. ANY REPRODUCTION IN PART OR AS A WHOLE WITHOUT THE WRITTEN PERMISSION OF BOREAL LASER INC IS PROHIBITED.

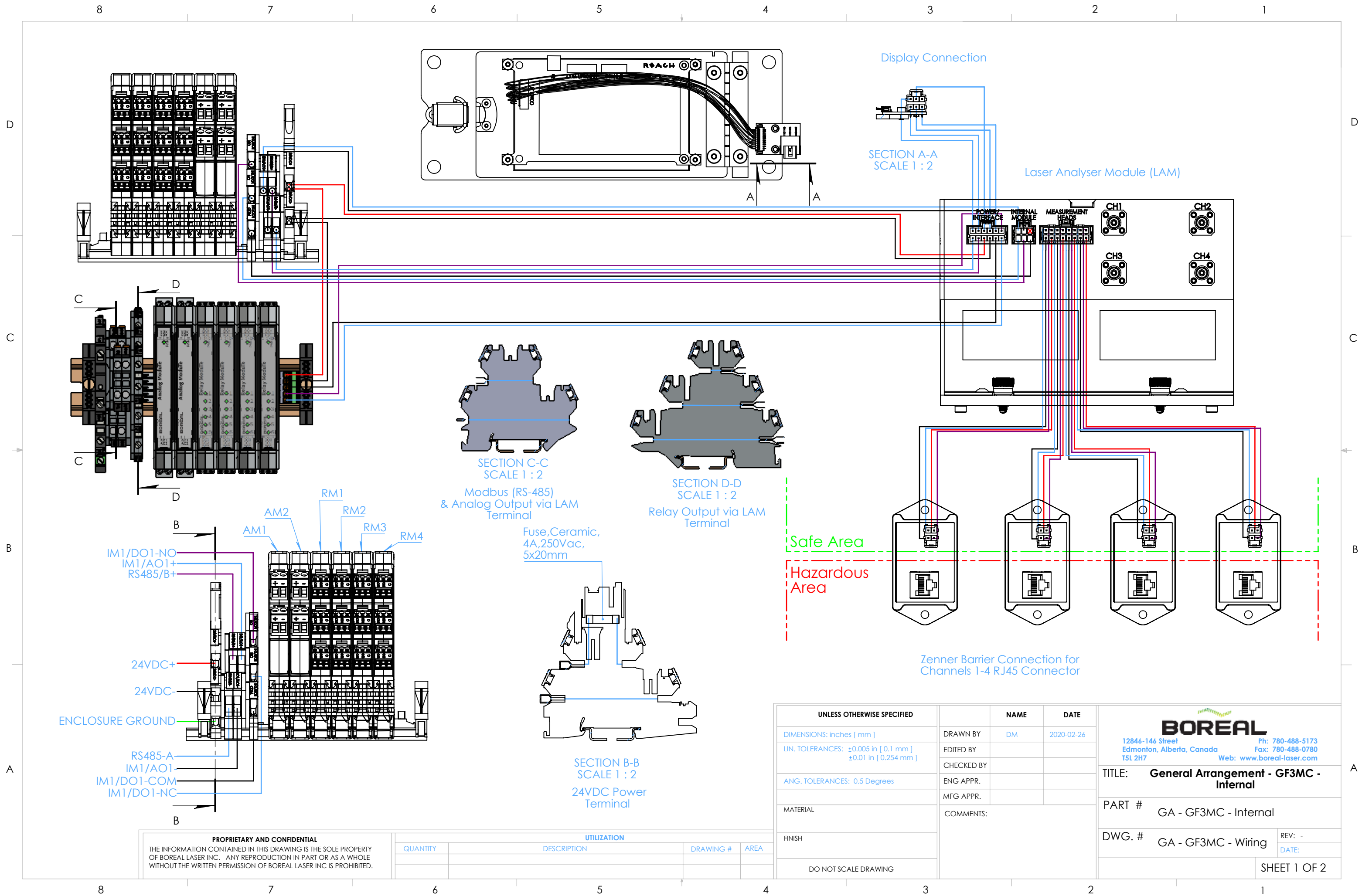
UTILIZATION		DRAWING #	AREA
QUANTITY	DESCRIPTION		

UNLESS OTHERWISE SPECIFIED		NAME	DATE
DIMENSIONS: inches [ mm ]		DRAWN BY	DM 2020-04-14
LIN. TOLERANCES: ±0.005 in [ 0.1 mm ] ±0.01 in [ 0.254 mm ]		EDITED BY	
ANG. TOLERANCES: 0.5 Degrees		CHECKED BY	
MATERIAL		ENG APPR.	
FINISH		MFG APPR.	
DO NOT SCALE DRAWING		COMMENTS: This is an uncontrolled document. The dimensions in these drawings are suggested and may change without notice. Please refer to technical documentation for installation dimensions.	

 12846-146 Street Edmonton, Alberta, Canada T5L 2H7 Ph: 780-488-5173 Fax: 780-488-0780 Web: www.boreal-laser.com	
TITLE: <b>GasFinder3-MC Termination Overview</b>	
PART # BL-GF3-MC-4-H2S-NA-A8-R24	
DWG. # N/A	REV: - DATE:
SHEET 1 OF 1	

8 7 6 5 4 3 2 1

8 7 6 5 4 3 2 1



**PROPRIETARY AND CONFIDENTIAL**  
THE INFORMATION CONTAINED IN THIS DRAWING IS THE SOLE PROPERTY OF BOREAL LASER INC. ANY REPRODUCTION IN PART OR AS A WHOLE WITHOUT THE WRITTEN PERMISSION OF BOREAL LASER INC IS PROHIBITED.

UTILIZATION			
QUANTITY	DESCRIPTION	DRAWING #	AREA

UNLESS OTHERWISE SPECIFIED	NAME	DATE
DIMENSIONS: inches [ mm ]	DRAWN BY DM	2020-02-26
LIN. TOLERANCES: ±0.005 in [ 0.1 mm ] ±0.01 in [ 0.254 mm ]	EDITED BY	
ANG. TOLERANCES: 0.5 Degrees	CHECKED BY	
MATERIAL	ENG APPR.	
FINISH	MFG APPR.	
DO NOT SCALE DRAWING	COMMENTS:	

**BOREAL**  
12846-146 Street Edmonton, Alberta, Canada T5L 2H7  
Ph: 780-488-5173 Fax: 780-488-0780 Web: www.boreal-laser.com

**TITLE: General Arrangement - GF3MC - Internal**

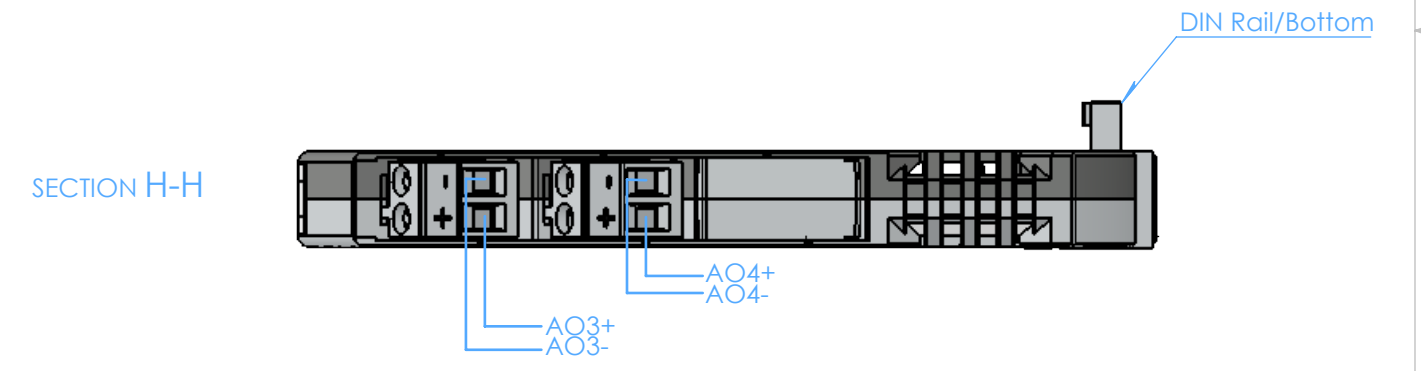
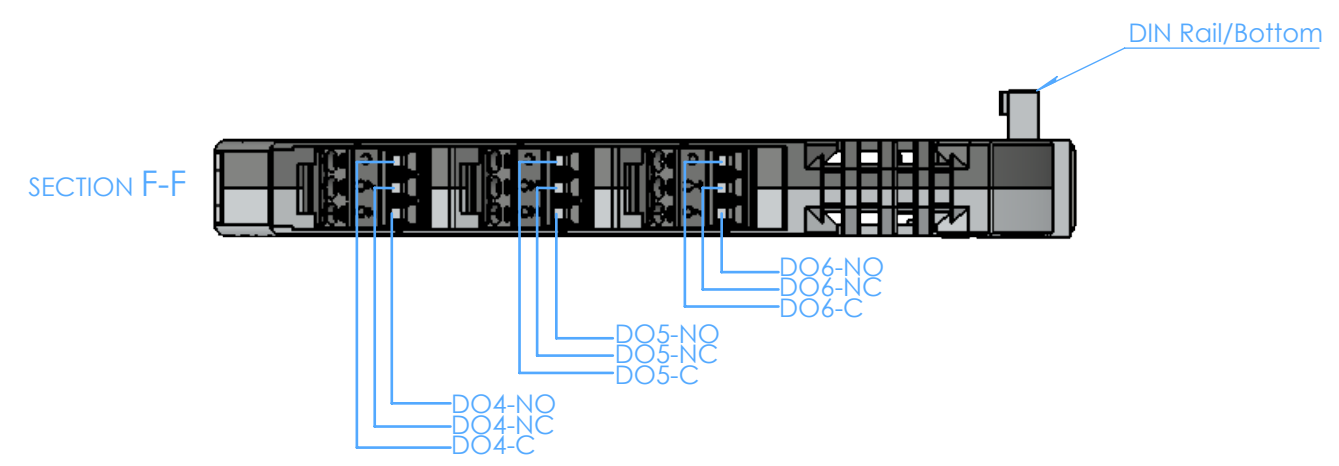
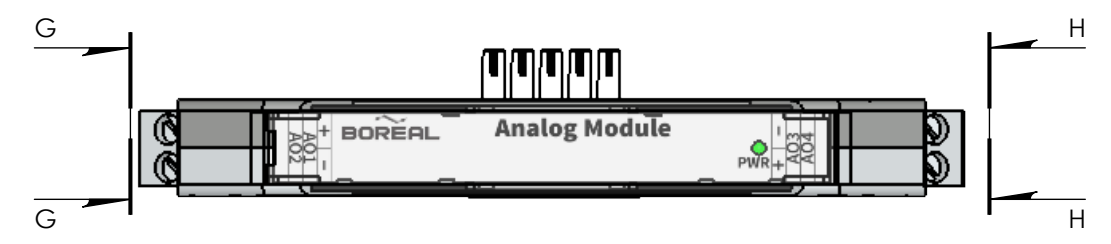
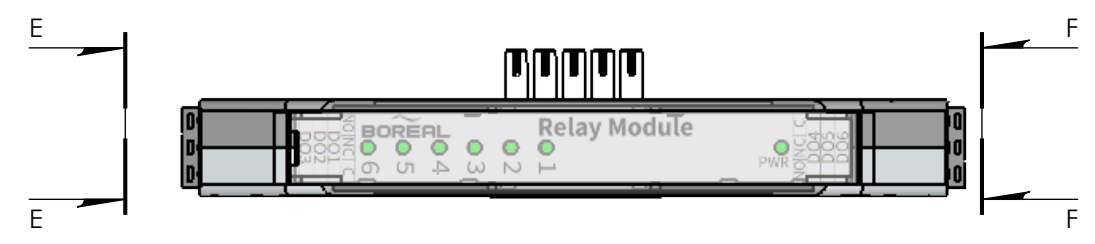
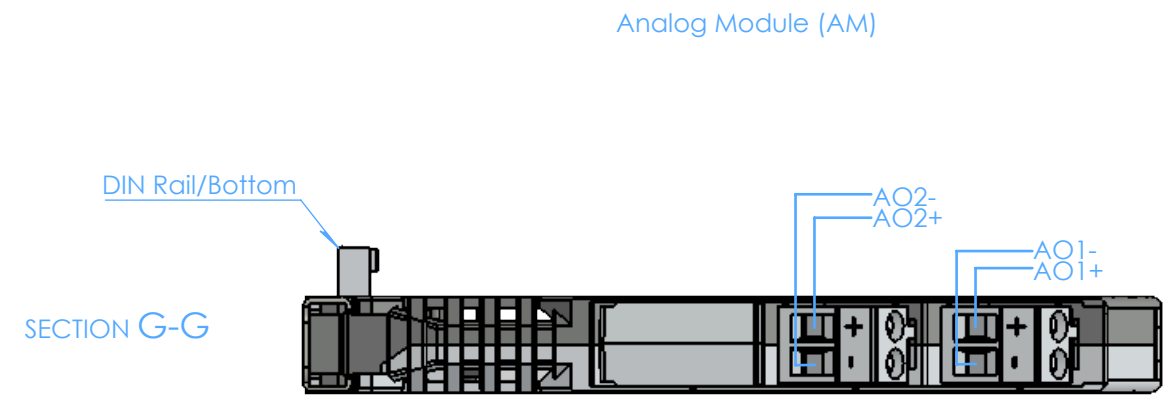
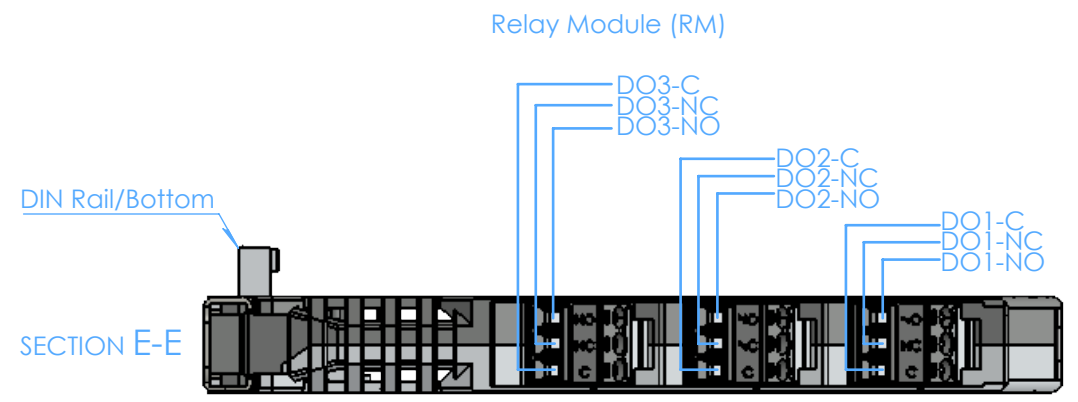
**PART # GA - GF3MC - Internal**

**DWG. # GA - GF3MC - Wiring** REV: -  
DATE:

**SHEET 1 OF 2**

8 7 6 5 4 3 2 1

D  
C  
B  
A



**PROPRIETARY AND CONFIDENTIAL**  
 THE INFORMATION CONTAINED IN THIS DRAWING IS THE SOLE PROPERTY OF BOREAL LASER INC. ANY REPRODUCTION IN PART OR AS A WHOLE WITHOUT THE WRITTEN PERMISSION OF BOREAL LASER INC IS PROHIBITED.

UTILIZATION			
QUANTITY	DESCRIPTION	DRAWING #	AREA

UNLESS OTHERWISE SPECIFIED	NAME	DATE
DIMENSIONS: inches [ mm ]	DRAWN BY	
LIN. TOLERANCES: ±0.005 in [ 0.1 mm ] ±0.01 in [ 0.254 mm ]	EDITED BY	
ANG. TOLERANCES: 0.5 Degrees	CHECKED BY	
MATERIAL	ENG APPR.	
FINISH	MFG APPR.	
DO NOT SCALE DRAWING	COMMENTS:	

**BOREAL**  
 12846-146 Street Ph: 780-488-5173  
 Edmonton, Alberta, Canada Fax: 780-488-0780  
 T5L 2H7 Web: www.boreal-laser.com

TITLE: **Analog and Relay Module Pinout**

PART #

DWG. # GA - GF3MC - Wiring REV:   
 DATE:   
 SHEET 2 OF 2

8 7 6 5 4 3 2 1